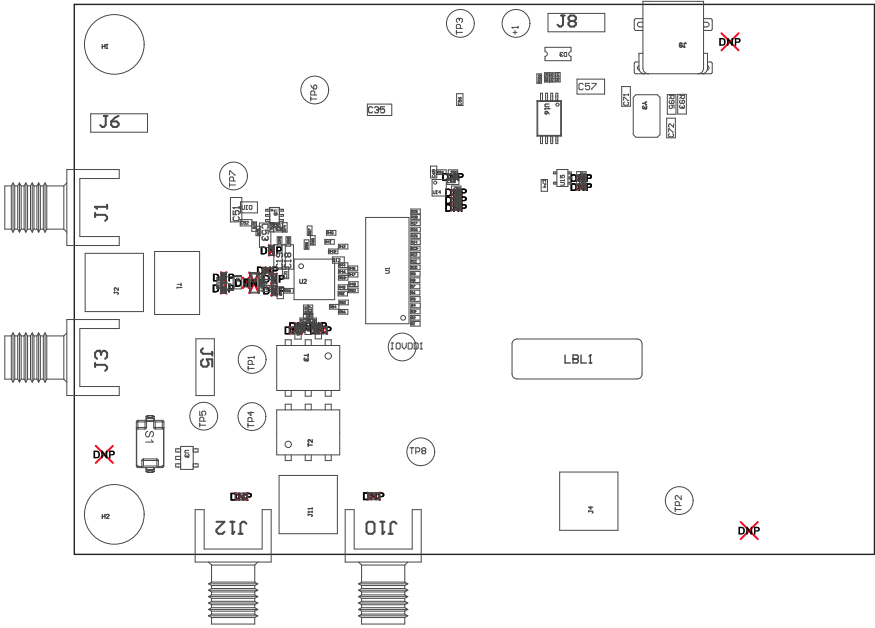


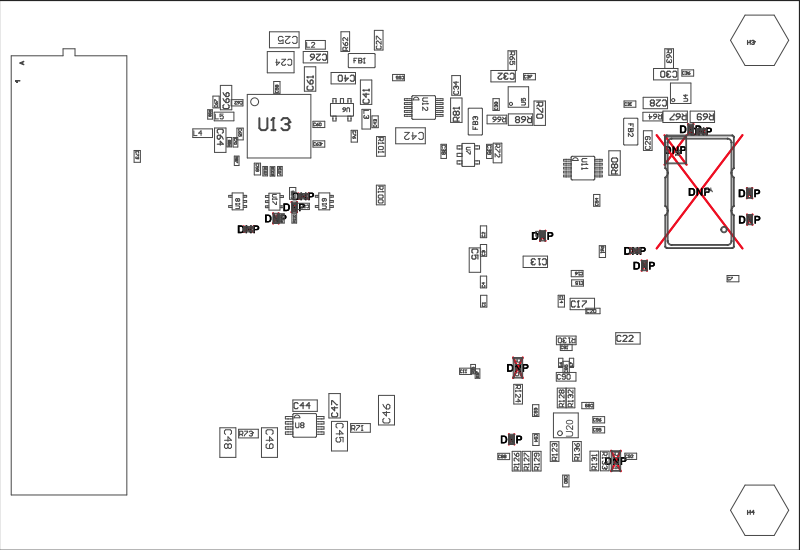
- Refer to QDR++ file for specific component location information.
- Assembly must be RoHS compliant and lead free
- Install label in silkscreened box after final wash (LBL3). Text shall be 9 pt font. Text shall be per the Label Table in the PDF schematic.



ZZ4 ■ These assemblies must comply with workmanship standards IPC-A-610 Class 2, unless otherwise specified.

COMPONENTS MARKED 'DNP' SHOULD NOT BE POPULATED.
ASSEMBLY VARIANT: 001

PCB VIEWED FROM TOP SIDE	BOARD #: DC092A	REV: A	SUN REV: Not In VersionControl
	TID #: N/A		
PLOT NAME = Top Assembly Drawing	GENERATED : 7/9/2019	1:12:30 PM	TEXAS INSTRUMENTS



COMPONENTS MARKED 'DNP' SHOULD NOT BE POPULATED.
ASSEMBLY VARIANT: 001

PCB VIEWED FROM BOTTOM SIDE	BOARD #: DC092A	REV: A	SUN REV: Not In VersionControl
	TID #: N/A		
PLOT NAME = Bottom Assembly Drawing	GENERATED : 7/9/2019	1:12:33 PM	TEXAS INSTRUMENTS